

DONATION PLEDGE FORM

“To Those who do good there is good in this world, and the Home of the Hereafter is even better” Al-Quran (16:30)

Please print all numbers and letters carefully.

Thank you.

Name: _____

Address: _____

City: _____

State/Province: _____

Postal Code: _____

Phone (home): _____

Email: _____

I would like to make my donation for the Conway Masjid:

By enclosed check.

I would like to make my pledge of \$ _____ per month for months and post dated checks are attached.

Your donations are tax deductible.

Tax ID number: 26-2091785

We look forward to your donation and praying with you at the new mosque soon.

Jazakum Allahu Khayran!

Donate Online at:

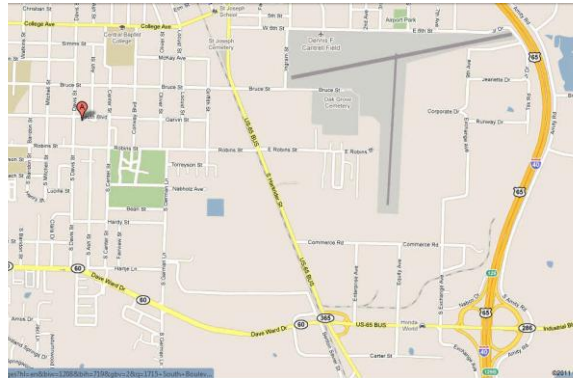
<http://muslimcenterofconway.yolasite.com/>

We urge you to take part in this worthy cause of building this mosque for the Muslims of today and tomorrow. If you have questions, please do not hesitate to contact us.

May Almighty Allah reward you for your donations and help towards this good cause. Insha Allah.

PLEASE COME

*...and pray with us at 1715 South Blvd
Conway AR 72034*



*For more information
please contact any of the board members below*

Br. Javed Shinwari
(501)-230-7860

Br. Lamine Diatta
(404) 915-7162

Br. Immad Qazi
(214)-695-2680

Br. Saad Baslom
(501)-470-5866

Contact us

By mail

Muslims Center of Conway

1715 South Blvd
P.O 10897
Conway AR 72034 USA

By e-mail

muslim.center@yahoo.com

Donate Online at:

<http://muslimcenterofconway.yolasite.com/>



MCC

Muslim Center Of Conway
1715 South Blvd
P.O Box 10897
Conway AR 72034

*“Whoever builds a Mosque for the
love of Allah, Allah will built for
him a mansion in paradise”*

(Bukhari and Muslim)



The current Masjid front and back as it stands today

WHO ARE WE?

The Muslim Center of Conway Association was founded in 1996 by international students of the local University, to provide the facilities and environment to Muslims to perform congregational prayers.

In 1997, by the Grace of Allah (Swt) and membership of few students, we purchased this small house built in 1933 and converted it into our place of worship.

The Muslim population has grown steadily over the past years and we have *Alhamdulillah* established many programs, such as:

- ✓ Five times daily *Salah*
- ✓ Regular *Jumma Salah*
- ✓ *Tarawi Salah and Iftar* during the month of *Ramadan*

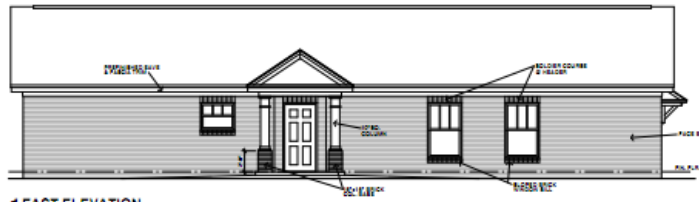
Over the years, we have seen a steady growth in our community. From a small group of international students we have grown into a multinational Islamic community with families and students from different parts of the globe.

WHAT WE WANT?

The current *Masjid* is too small and worn down. With its fragile structure and limited space, it cannot accommodate the attendance at the congregational prayers or gatherings during *Ramadan, Eid and Fridays*.

We therefore have designed a contemporary and larger structure that will suit the needs of our community for the foreseeable future.

**PLEASE TURN TO THE BACK OF THIS
PAGE TO VIEW THE NEW PROJECT**



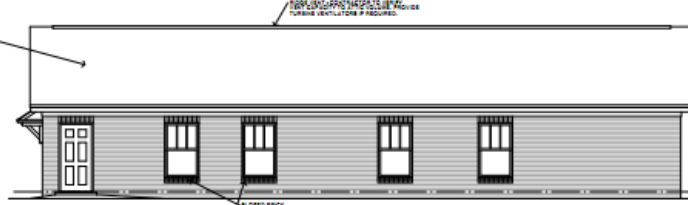
1 EAST ELEVATION



2 NORTH ELEVATION



3 SOUTH ELEVATION



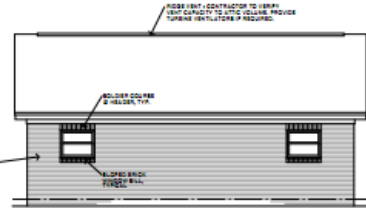
4 WEST ELEVATION



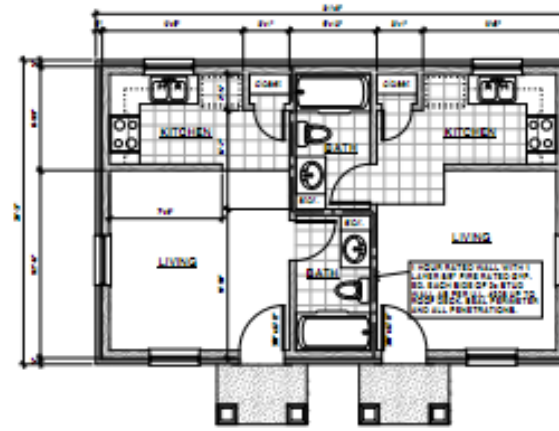
5 NORTH ELEVATION - DUPLEX



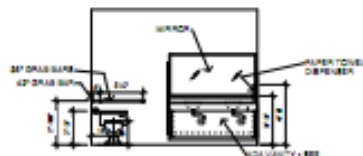
6 WEST ELEVATION - DUPLEX



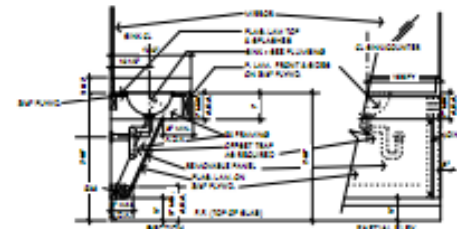
7 SOUTH ELEVATION - DUPLEX



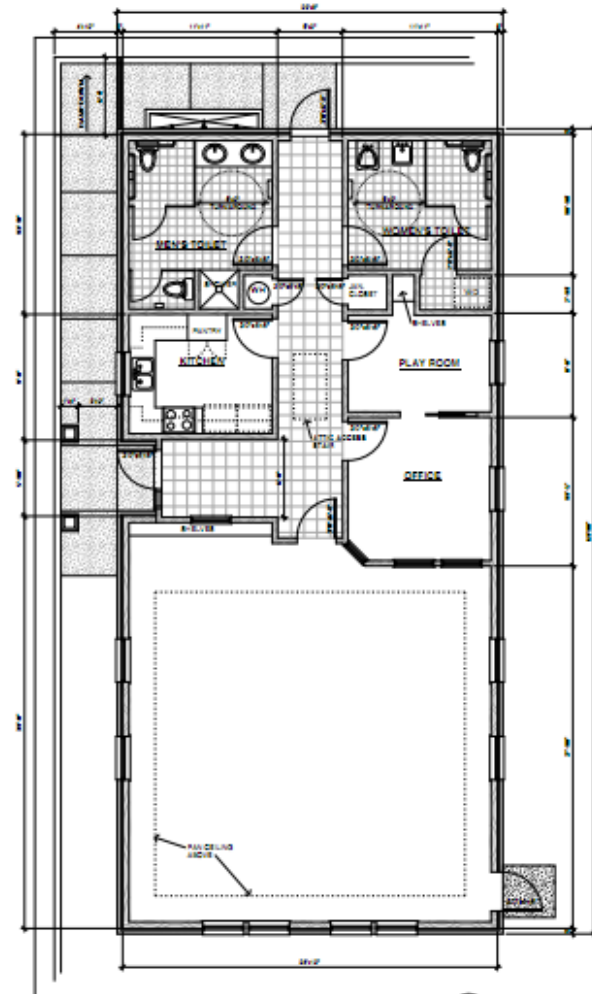
2 FLOOR PLAN - APARTMENT



3 MEN'S RESTROOM PLAN - WORSHIP CENTER



4 LAV. SECTION/ELEV.



1 FLOOR PLAN - WORSHIP CENTER